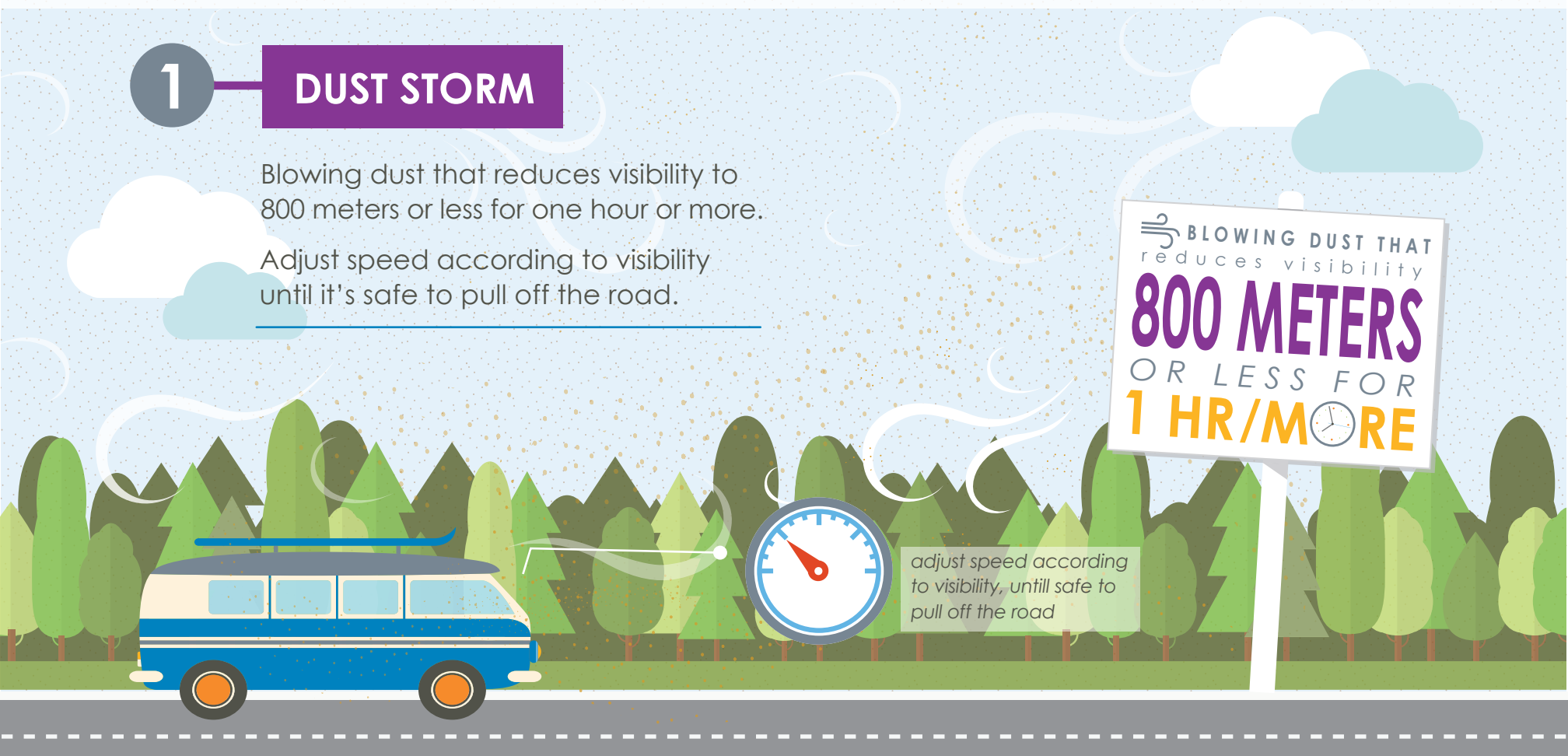




# 1 DUST STORM

Blowing dust that reduces visibility to 800 meters or less for one hour or more.  
Adjust speed according to visibility until it's safe to pull off the road.

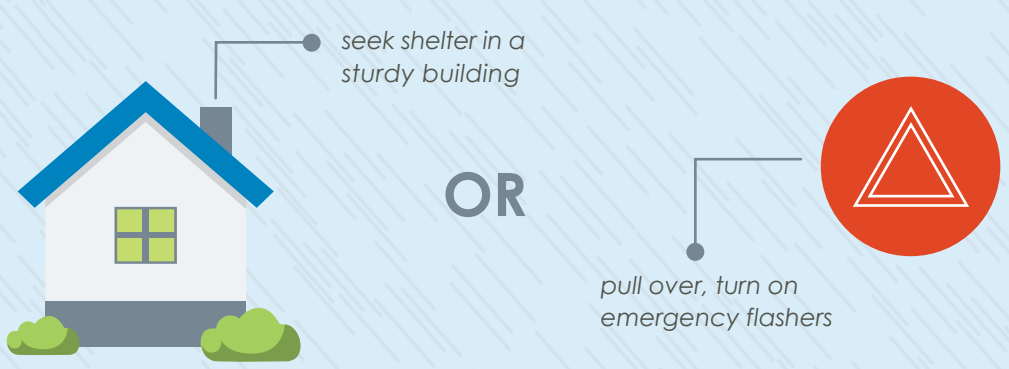
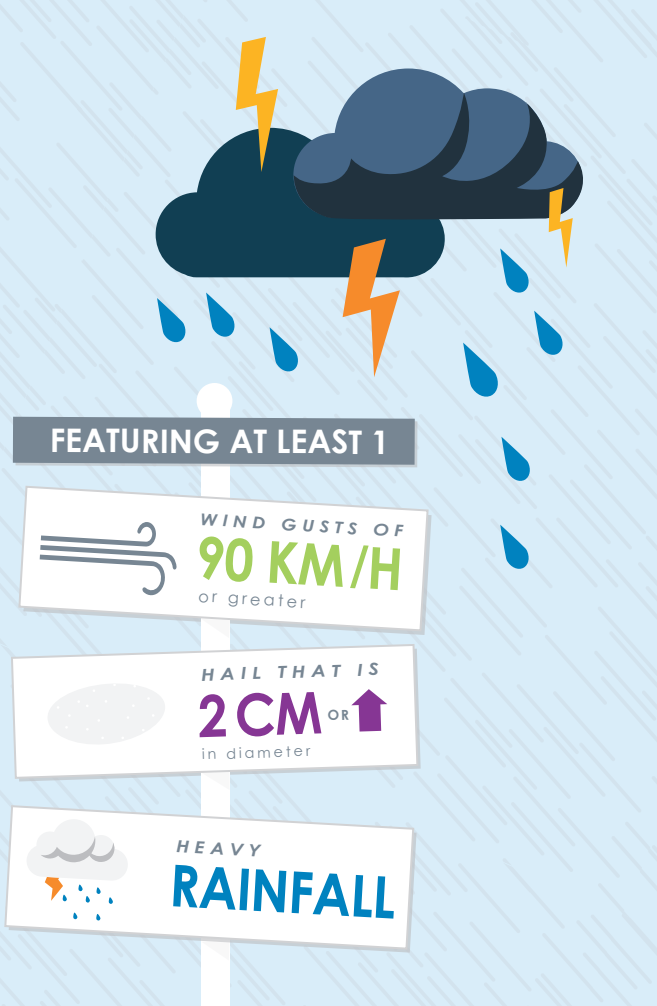


# 2 SEVERE THUNDERSTORM

Features at least one of:

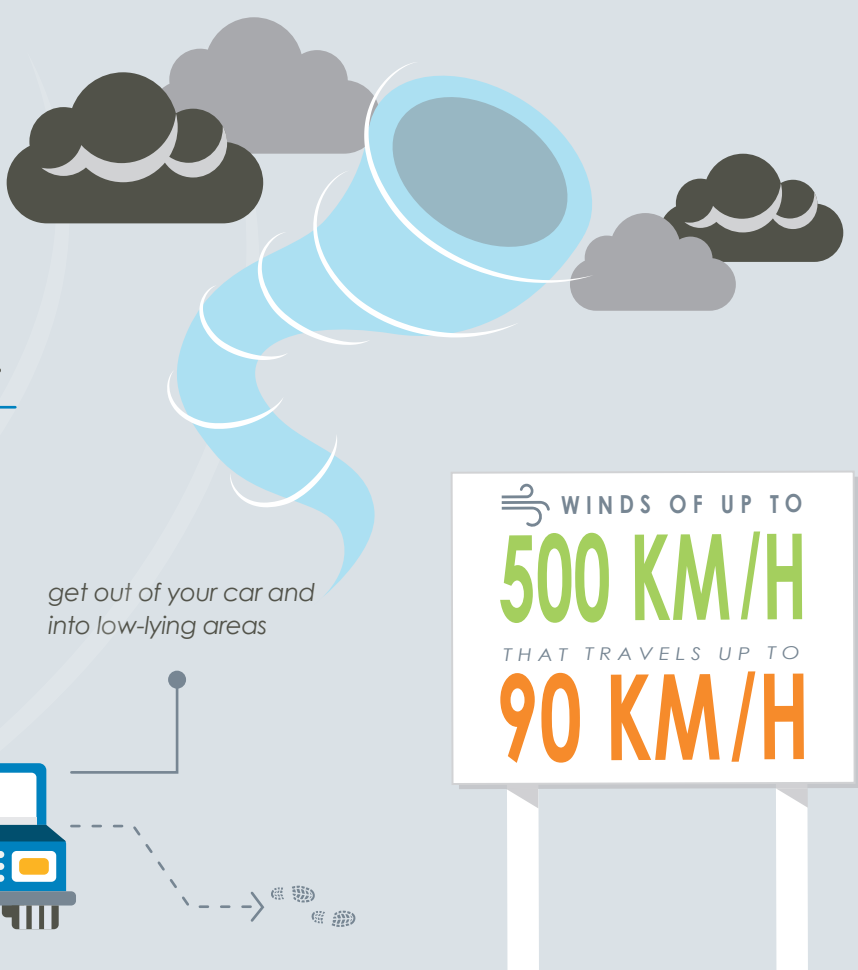
- Wind gusts of 90 km/h or greater
- Hail that's two centimeters or larger in diameter
- Heavy rainfall

Seek shelter in a sturdy building or pull over and turn on emergency flashers to reduce hail's impact on your vehicle.



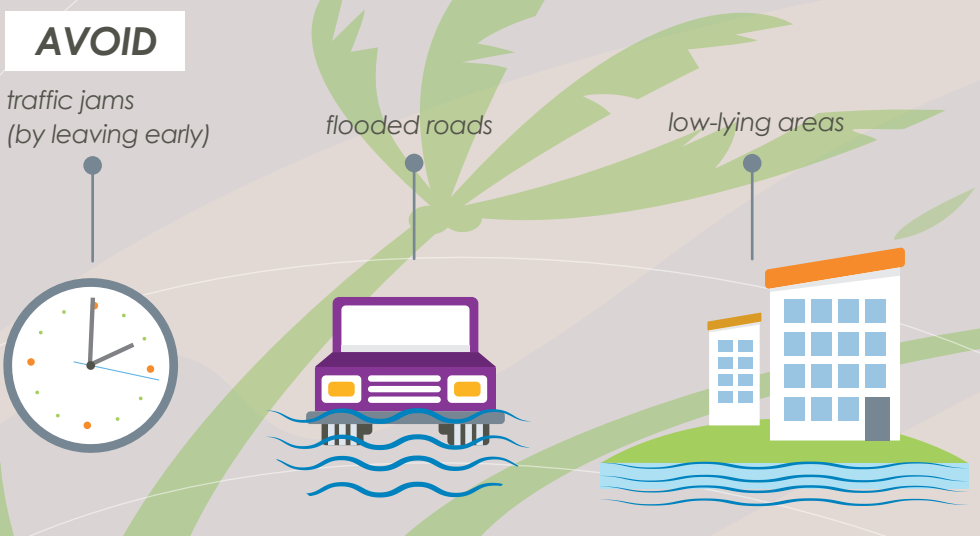
# 3 TORNADO

System with winds of up to 500 km/h that travels at up to 90 km/h.  
Seek sturdy buildings if you can. Get out of your car and into a low-lying area if you can't.



# 4 TROPICAL STORMS

Wind speeds of 63 – 117 km/h that normally hit coastal areas.  
Avoid traffic jams (by leaving early), flooded roads and low-lying areas.



# GENERIC WEATHER WARNING

For rare extreme weather like heavy fog or the first event of the season.

